

# EVACUATION SIGN AND DIAGRAM

## 137 ARMSTRONG ROAD (GROUND FLOOR), CANNON HILL

### IN CASE OF FIRE

**R**EMOVE PEOPLE  
from immediate danger

**A**LERT THE FIRE SERVICE  
• break manual call point  
• call 000

**C**ONFINE FIRE & SMOKE  
close doors and windows (if safe to do so)

**E**VACUATE  
to the ASSEMBLY AREA

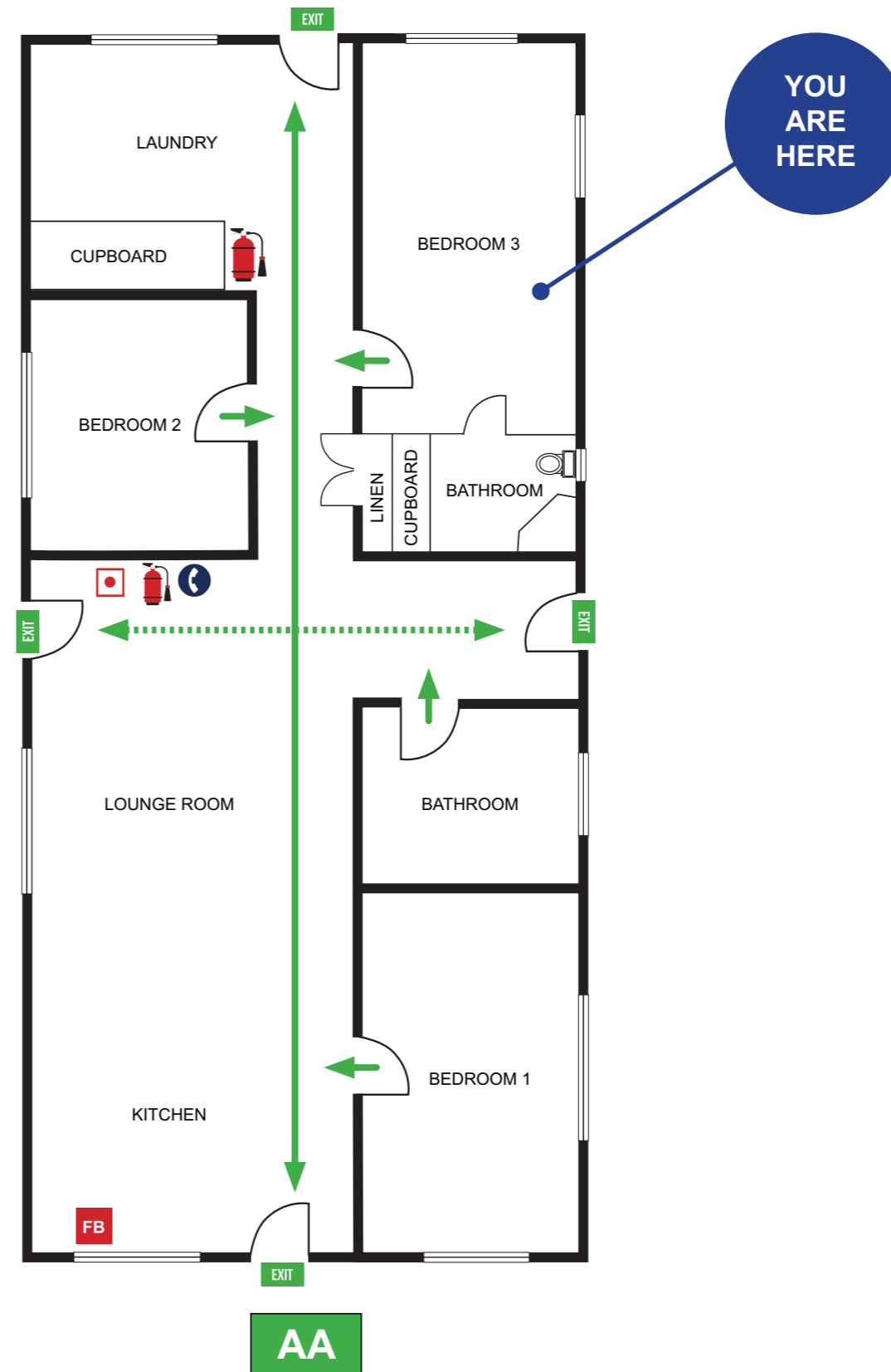
Mobility impaired persons  
should evacuate immediately on  
hearing the fire alarm assisted  
by a nominated person.



**000**  
EMERGENCY

IN AN EMERGENCY DIAL 000

EXIT	
ASSEMBLY AREA	
PATH OF EXIT	
ALTERNATE PATH	
FIRE HOSE REEL	
EXTINGUISHER	
FIRE BLANKET	
TELEPHONE	
FIRE INDICATOR PANEL	



# EVACUATION SIGN AND DIAGRAM

## 137 ARMSTRONG ROAD (GROUND FLOOR), CANNON HILL

### IN CASE OF FIRE

**R**EMOVE PEOPLE  
from immediate danger

**A**LERT THE FIRE SERVICE  
• break manual call point  
• call 000

**C**ONFINE FIRE & SMOKE  
close doors and windows (if safe to do so)

**E**VACUATE  
to the ASSEMBLY AREA

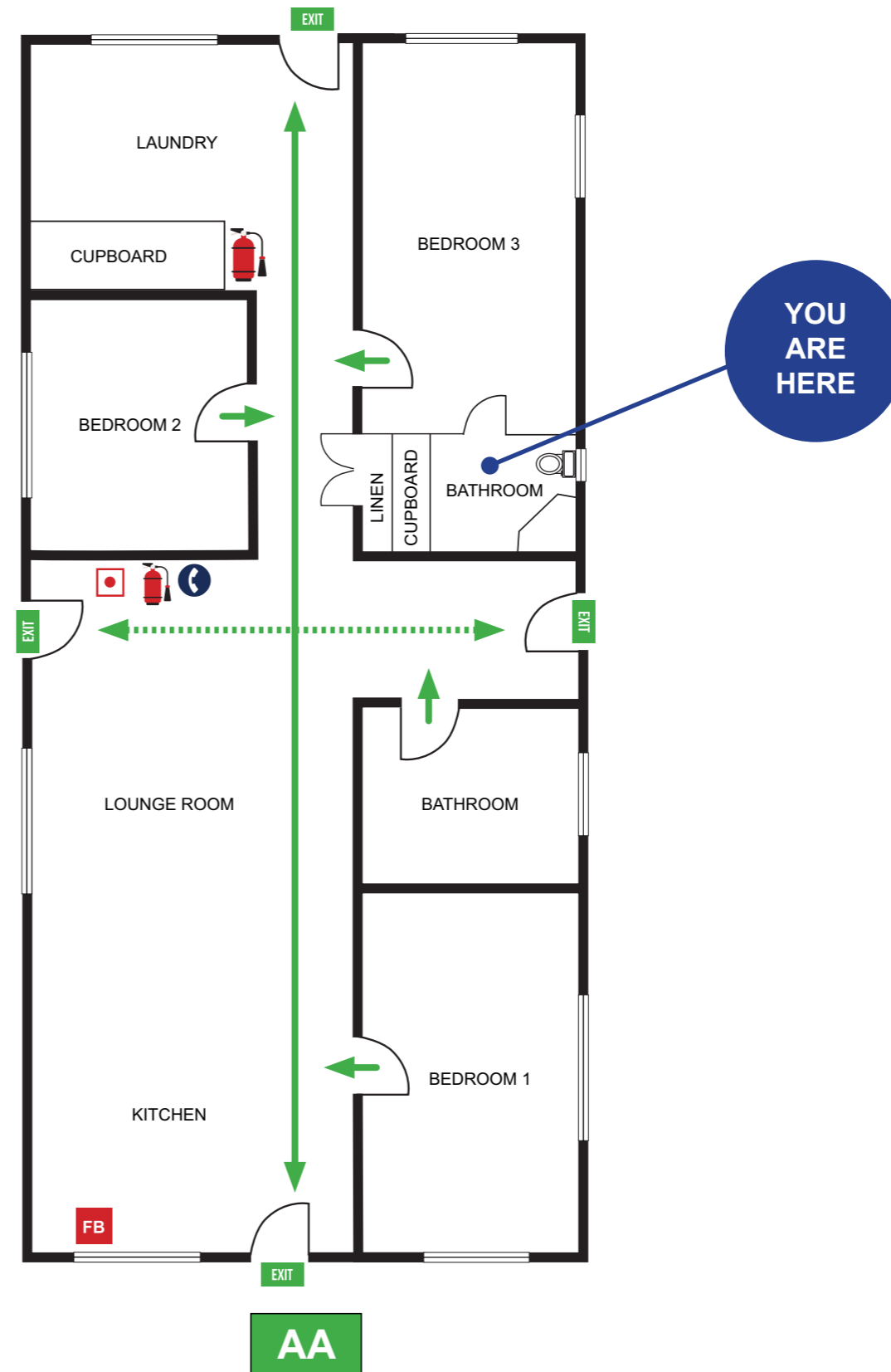
Mobility impaired persons  
should evacuate immediately on  
hearing the fire alarm assisted  
by a nominated person.



**000**  
EMERGENCY

IN AN EMERGENCY DIAL 000

EXIT	
ASSEMBLY AREA	
PATH OF EXIT	
ALTERNATE PATH	
FIRE HOSE REEL	
EXTINGUISHER	
FIRE BLANKET	
TELEPHONE	
FIRE INDICATOR PANEL	



# EVACUATION SIGN AND DIAGRAM

## 137 ARMSTRONG ROAD (GROUND FLOOR), CANNON HILL

### IN CASE OF FIRE

**R**EMOVE PEOPLE  
from immediate danger

**A**LERT THE FIRE SERVICE  
• break manual call point  
• call 000

**C**ONFINE FIRE & SMOKE  
close doors and windows (if safe to do so)

**E**VACUATE  
to the ASSEMBLY AREA

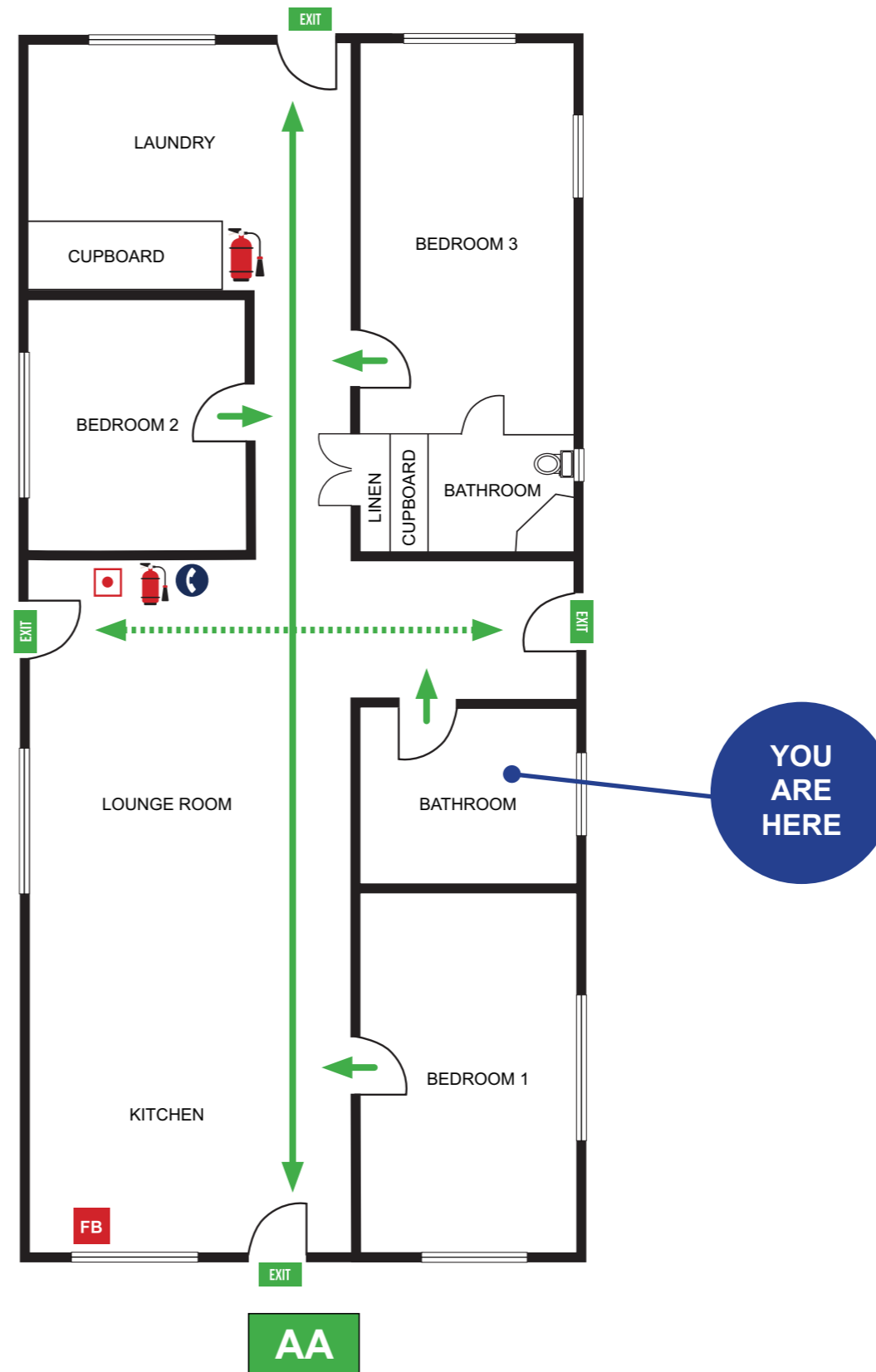
Mobility impaired persons  
should evacuate immediately on  
hearing the fire alarm assisted  
by a nominated person.



**000**  
**EMERGENCY**

IN AN EMERGENCY DIAL 000

EXIT	
ASSEMBLY AREA	
PATH OF EXIT	
ALTERNATE PATH	
FIRE HOSE REEL	
EXTINGUISHER	
FIRE BLANKET	
TELEPHONE	
FIRE INDICATOR PANEL	



# EVACUATION SIGN AND DIAGRAM

## 137 ARMSTRONG ROAD (GROUND FLOOR), CANNON HILL

### IN CASE OF FIRE

**R**EMOVE PEOPLE  
from immediate danger

**A**LERT THE FIRE SERVICE  
• break manual call point  
• call 000

**C**ONFINE FIRE & SMOKE  
close doors and windows (if safe to do so)

**E**VACUATE  
to the ASSEMBLY AREA

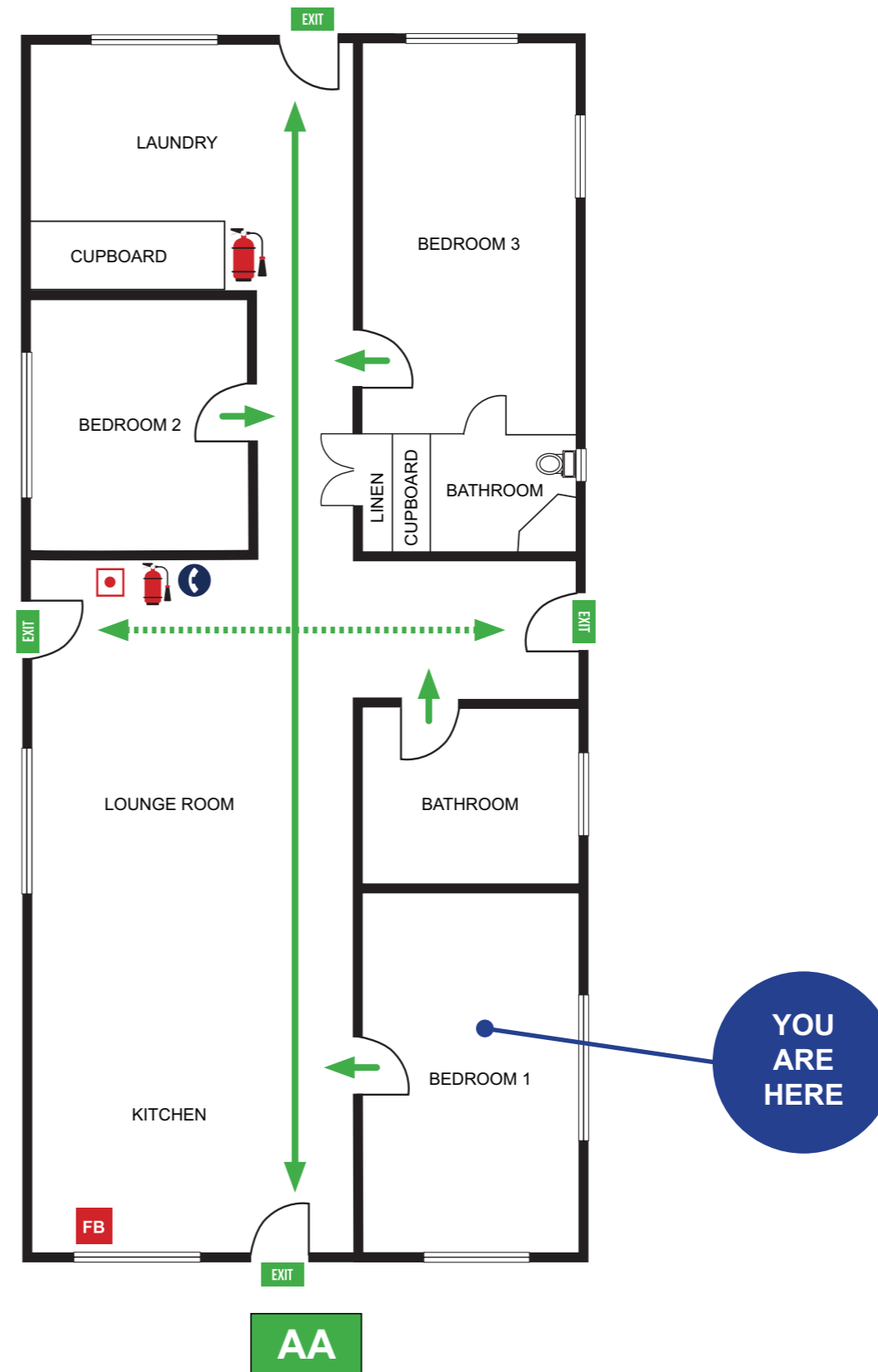
Mobility impaired persons  
should evacuate immediately on  
hearing the fire alarm assisted  
by a nominated person.



**000**  
EMERGENCY

IN AN EMERGENCY DIAL 000

EXIT	
ASSEMBLY AREA	
PATH OF EXIT	
ALTERNATE PATH	
FIRE HOSE REEL	
EXTINGUISHER	
FIRE BLANKET	
TELEPHONE	
FIRE INDICATOR PANEL	



# EVACUATION SIGN AND DIAGRAM

## 137 ARMSTRONG ROAD (GROUND FLOOR), CANNON HILL

### IN CASE OF FIRE

**R**EMOVE PEOPLE  
from immediate danger

**A**LERT THE FIRE SERVICE  
• break manual call point  
• call 000

**C**ONFINE FIRE & SMOKE  
close doors and windows (if safe to do so)

**E**VACUATE  
to the ASSEMBLY AREA

Mobility impaired persons  
should evacuate immediately on  
hearing the fire alarm assisted  
by a nominated person.

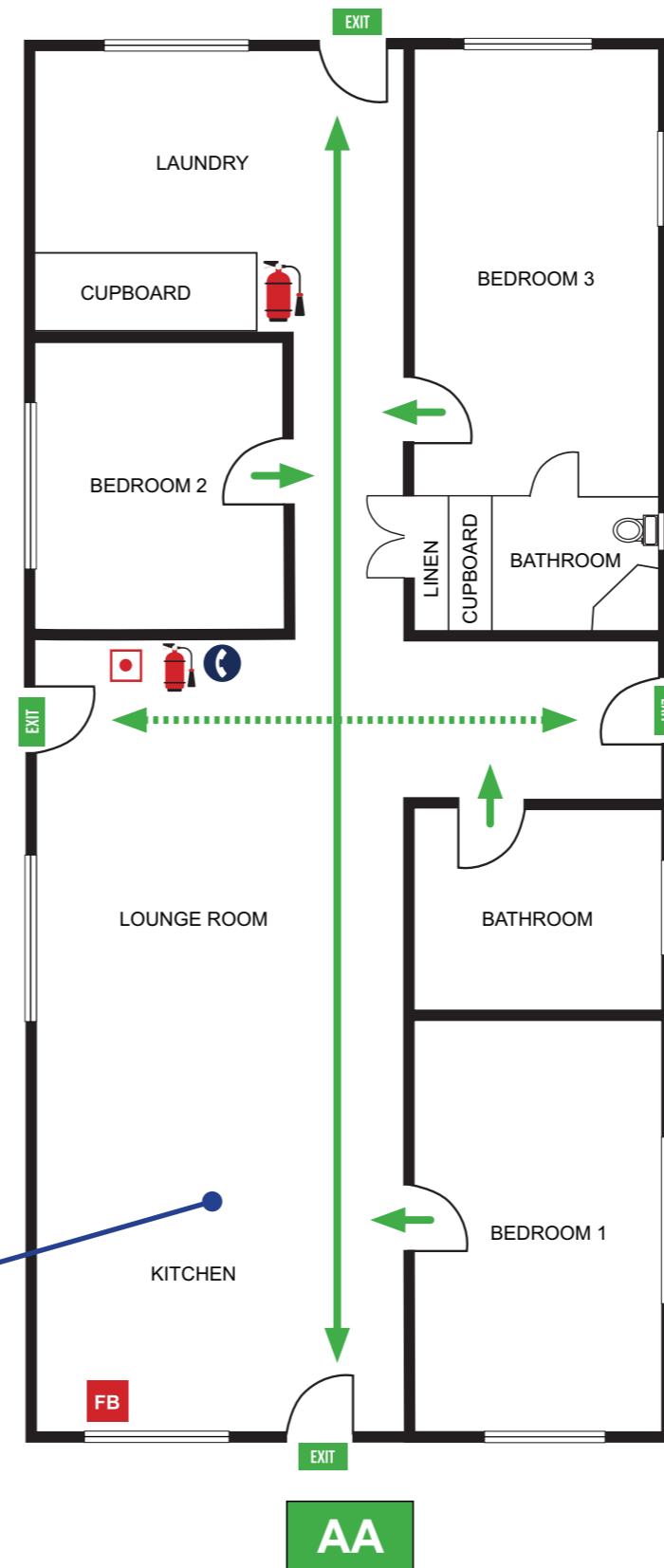


**000**  
EMERGENCY

IN AN EMERGENCY DIAL 000

EXIT	
ASSEMBLY AREA	
PATH OF EXIT	
ALTERNATE PATH	
FIRE HOSE REEL	
EXTINGUISHER	
FIRE BLANKET	
TELEPHONE	
FIRE INDICATOR PANEL	

**YOU  
ARE  
HERE**



# EVACUATION SIGN AND DIAGRAM

## 137 ARMSTRONG ROAD (GROUND FLOOR), CANNON HILL

### IN CASE OF FIRE

**R**EMOVE PEOPLE  
from immediate danger

**A**LERT THE FIRE SERVICE  
• break manual call point  
• call 000

**C**ONFINE FIRE & SMOKE  
close doors and windows (if safe to do so)

**E**VACUATE  
to the ASSEMBLY AREA

Mobility impaired persons  
should evacuate immediately on  
hearing the fire alarm assisted  
by a nominated person.

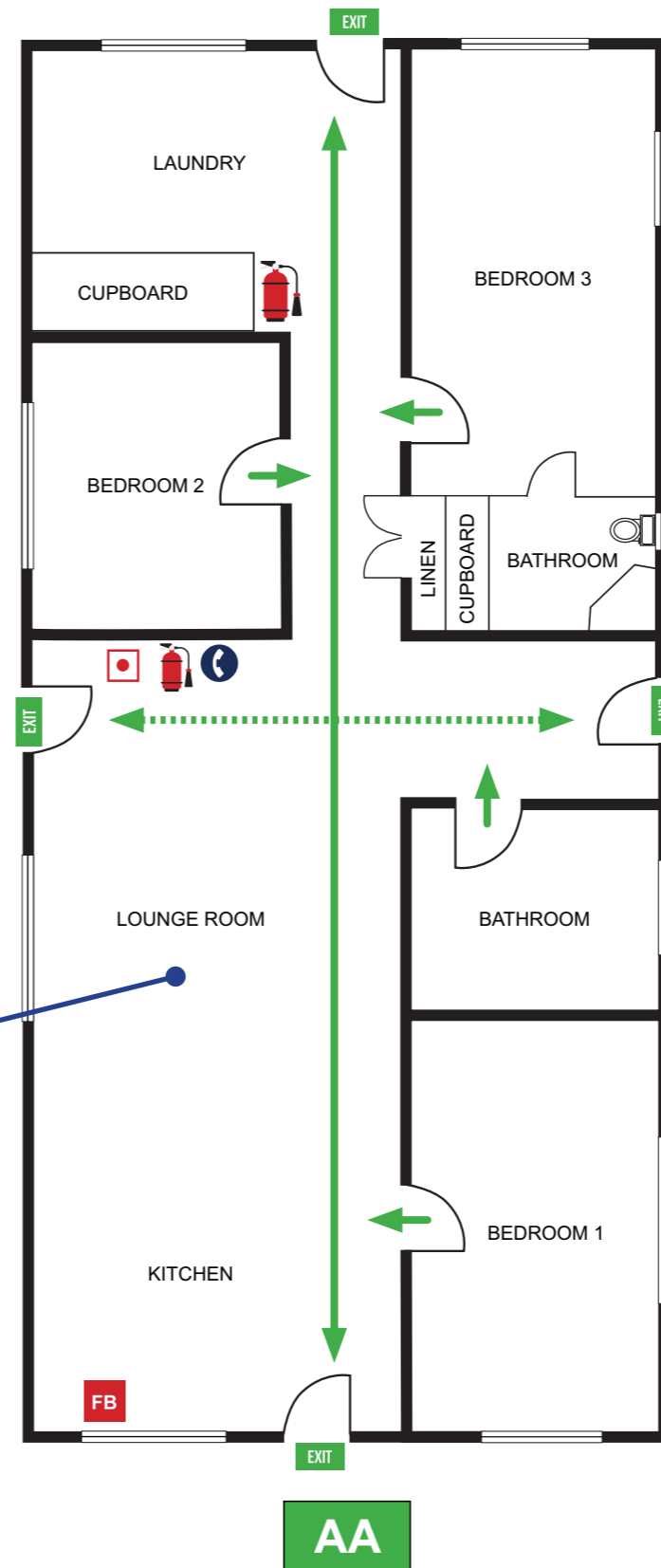


**000**  
EMERGENCY

IN AN EMERGENCY DIAL 000

EXIT	
ASSEMBLY AREA	
PATH OF EXIT	
ALTERNATE PATH	
FIRE HOSE REEL	
EXTINGUISHER	
FIRE BLANKET	
TELEPHONE	
FIRE INDICATOR PANEL	

**YOU ARE HERE**



# EVACUATION SIGN AND DIAGRAM

## 137 ARMSTRONG ROAD (GROUND FLOOR), CANNON HILL

### IN CASE OF FIRE

**R**EMOVE PEOPLE  
from immediate danger

**A**LERT THE FIRE SERVICE  
• break manual call point  
• call 000

**C**ONFINE FIRE & SMOKE  
close doors and windows (if safe to do so)

**E**VACUATE  
to the ASSEMBLY AREA

Mobility impaired persons  
should evacuate immediately on  
hearing the fire alarm assisted  
by a nominated person.

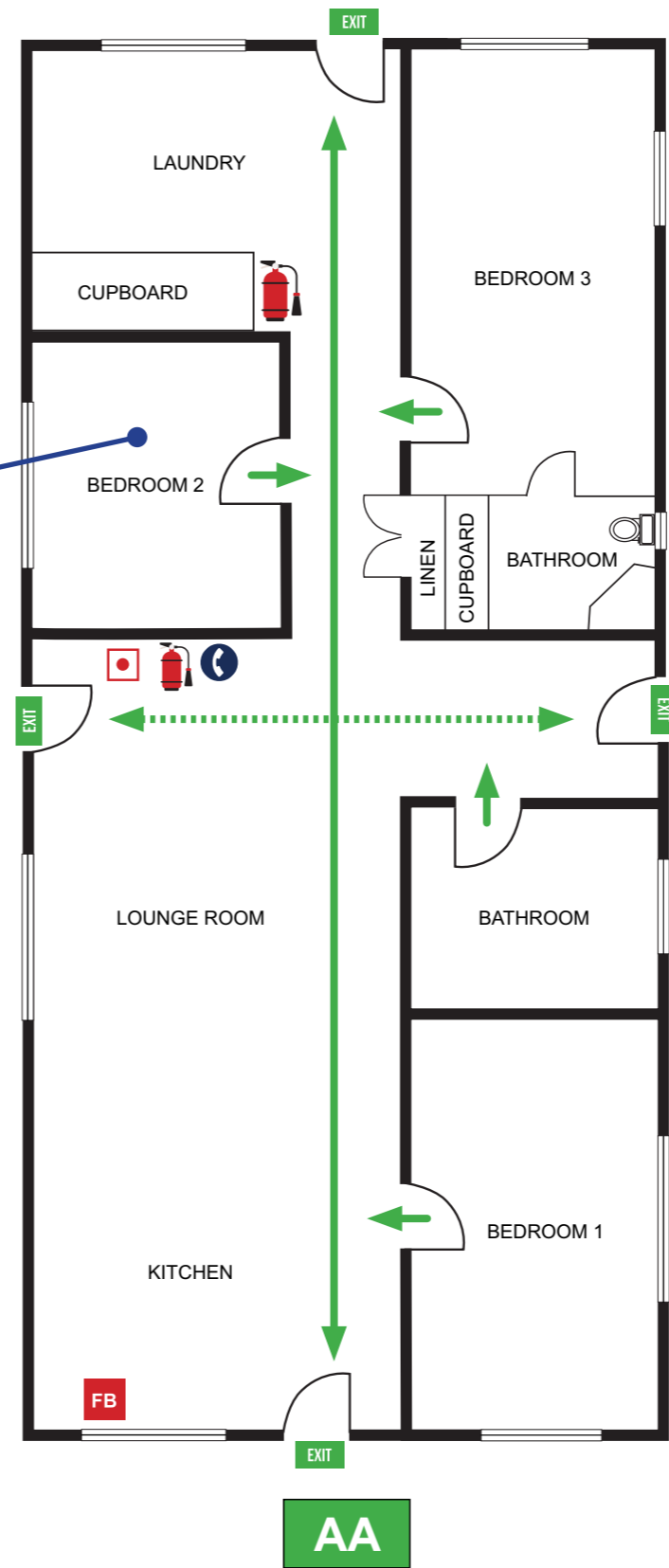


**000**  
**EMERGENCY**

IN AN EMERGENCY DIAL 000

EXIT	
ASSEMBLY AREA	
PATH OF EXIT	
ALTERNATE PATH	
FIRE HOSE REEL	
EXTINGUISHER	
FIRE BLANKET	
TELEPHONE	
FIRE INDICATOR PANEL	

**YOU  
ARE  
HERE**



# EVACUATION SIGN AND DIAGRAM

## 137 ARMSTRONG ROAD (GROUND FLOOR), CANNON HILL

### IN CASE OF FIRE

**R**EMOVE PEOPLE  
from immediate danger

**A**LERT THE FIRE SERVICE  
• break manual call point  
• call 000

**C**ONFINE FIRE & SMOKE  
close doors and windows (if safe to do so)

**E**VACUATE  
to the ASSEMBLY AREA

Mobility impaired persons  
should evacuate immediately on  
hearing the fire alarm assisted  
by a nominated person.



**000**  
EMERGENCY

IN AN EMERGENCY DIAL 000

EXIT	
ASSEMBLY AREA	
PATH OF EXIT	
ALTERNATE PATH	
FIRE HOSE REEL	
EXTINGUISHER	
FIRE BLANKET	
TELEPHONE	
FIRE INDICATOR PANEL	

YOU  
ARE  
HERE

