

EVACUATION SIGN AND DIAGRAM

660 CREEK ROAD (UPSTAIRS), MOUNT GRAVATT

IN CASE OF FIRE

REMOVE PEOPLE
from immediate danger

ALERT THE FIRE SERVICE
• break manual call point
• call 000

CONFINE FIRE & SMOKE
close doors and windows (if safe to do so)

EVACUATE
to the ASSEMBLY AREA

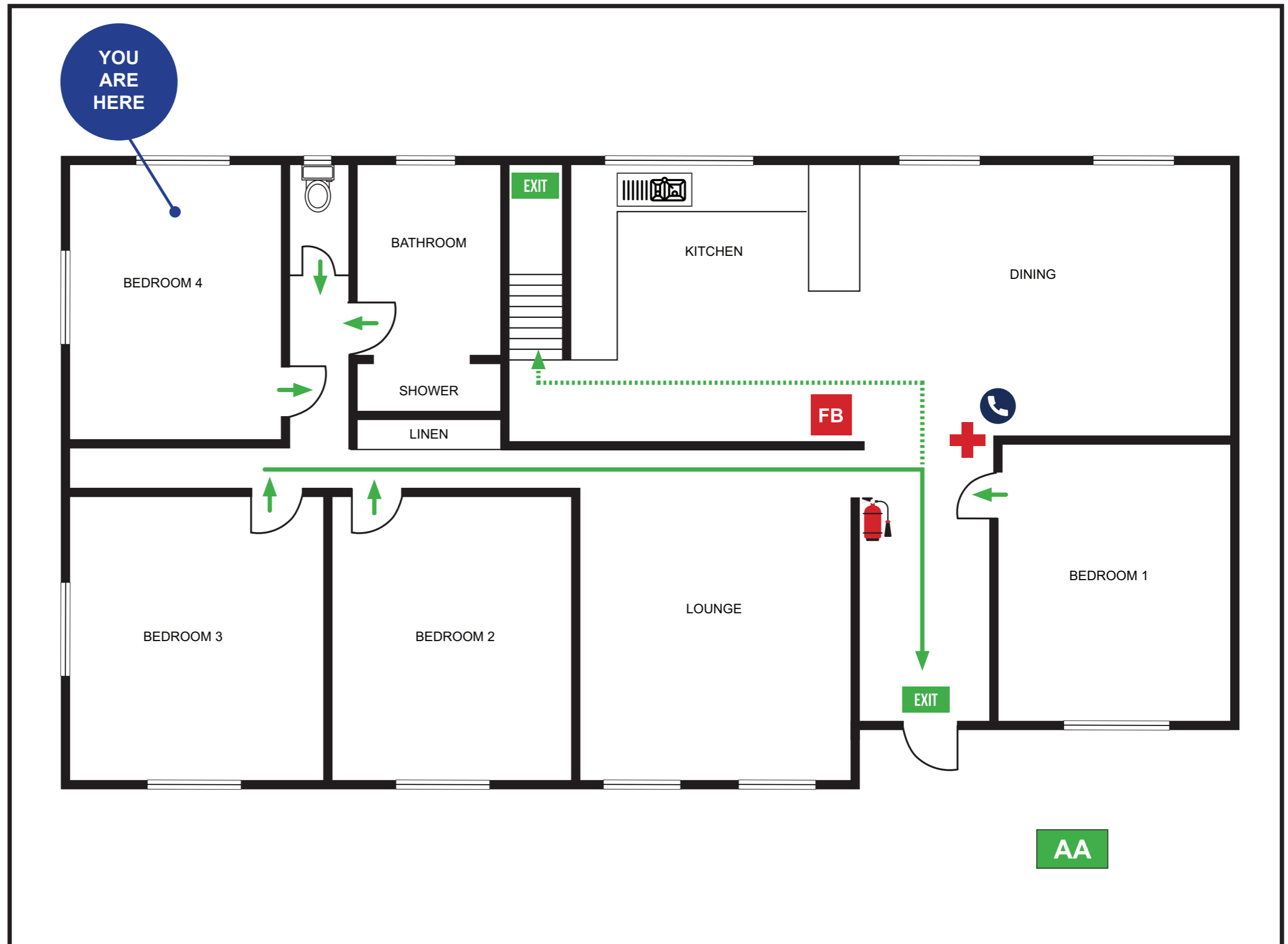
Mobility impaired persons
should evacuate immediately on
hearing the fire alarm assisted
by a nominated person.



000
EMERGENCY

IN AN EMERGENCY DIAL 000

EXIT	
ASSEMBLY AREA	
PATH OF EXIT	
ALTERNATE PATH	
FIRE HOSE REEL	
EXTINGUISHER	
FIRE BLANKET	
TELEPHONE	
FIRE INDICATOR PANEL	



EVACUATION SIGN AND DIAGRAM

660 CREEK ROAD (UPSTAIRS), MOUNT GRAVATT

IN CASE OF FIRE

REMOVE PEOPLE
from immediate danger

ALERT THE FIRE SERVICE
• break manual call point
• call 000

CONFINE FIRE & SMOKE
close doors and windows (if safe to do so)

EVACUATE
to the ASSEMBLY AREA

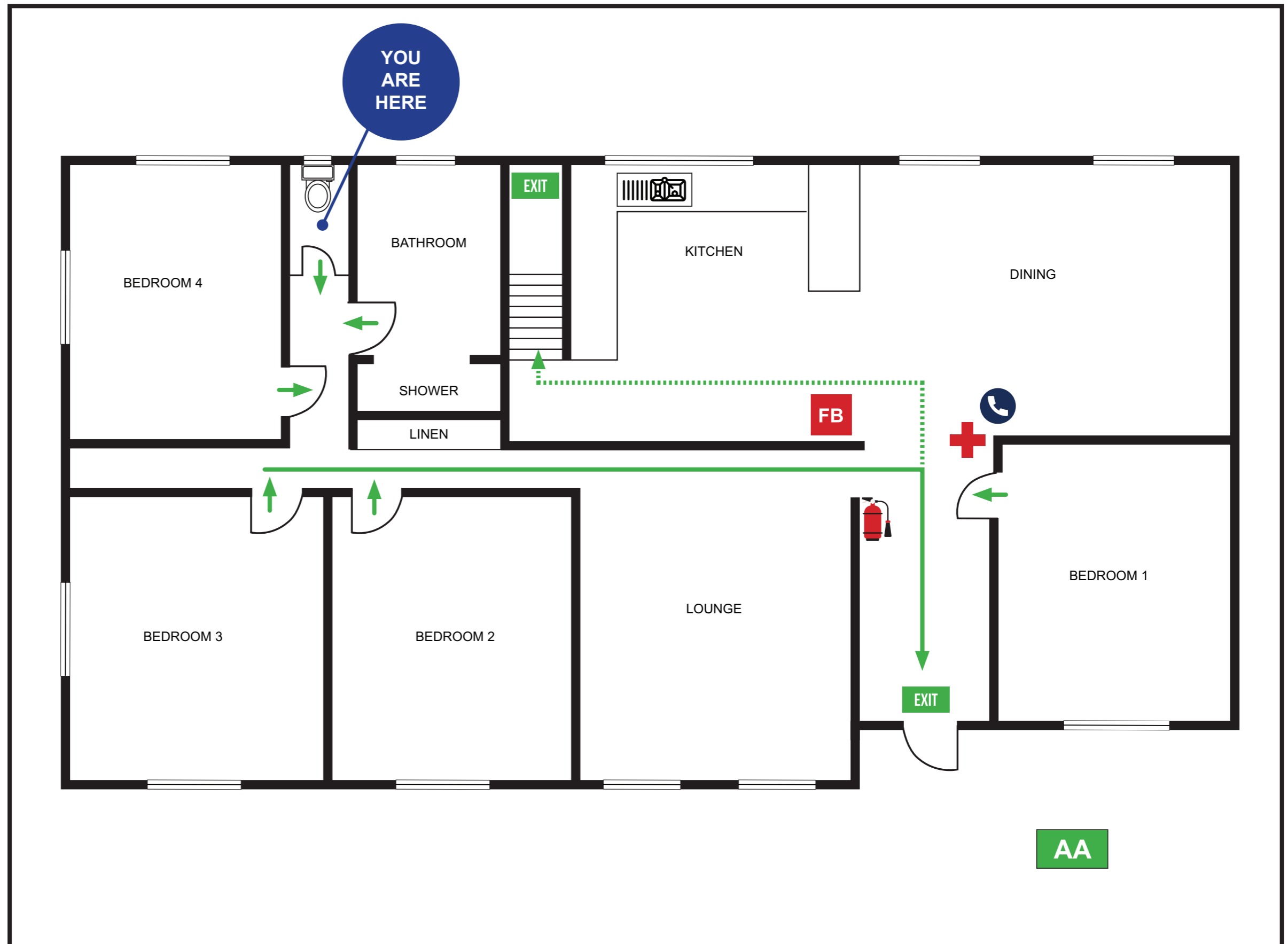
Mobility impaired persons
should evacuate immediately on
hearing the fire alarm assisted
by a nominated person.



000
EMERGENCY

IN AN EMERGENCY DIAL 000

EXIT	
ASSEMBLY AREA	
PATH OF EXIT	
ALTERNATE PATH	
FIRE HOSE REEL	
EXTINGUISHER	
FIRE BLANKET	
TELEPHONE	
FIRE INDICATOR PANEL	



EVACUATION SIGN AND DIAGRAM

660 CREEK ROAD (UPSTAIRS), MOUNT GRAVATT

IN CASE OF FIRE

REMOVE PEOPLE
from immediate danger

ALERT THE FIRE SERVICE
• break manual call point
• call 000

CONFINE FIRE & SMOKE
close doors and windows (if safe to do so)

EVACUATE
to the ASSEMBLY AREA

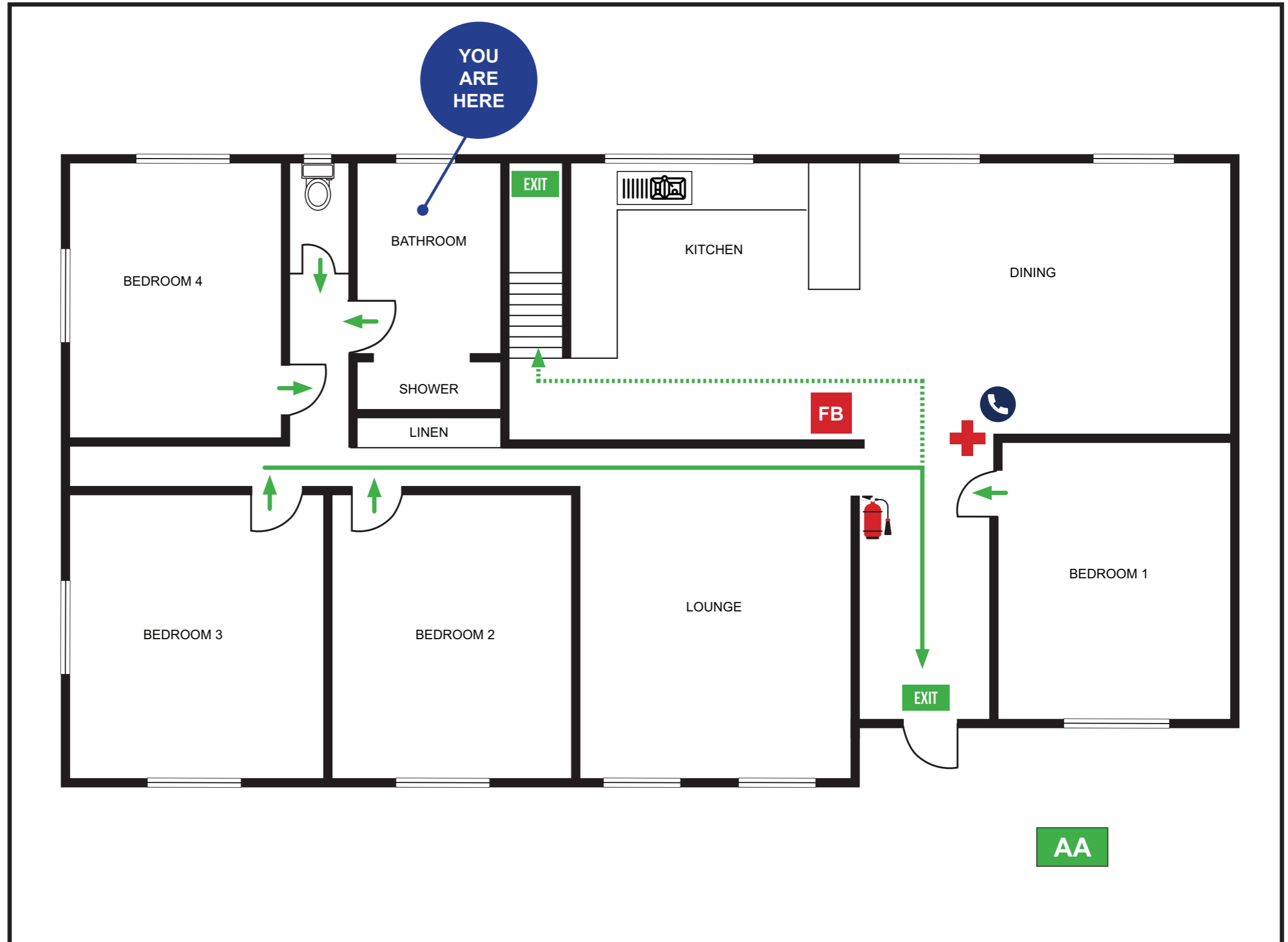
Mobility impaired persons
should evacuate immediately on
hearing the fire alarm assisted
by a nominated person.



000
EMERGENCY

IN AN EMERGENCY DIAL 000

EXIT	
ASSEMBLY AREA	
PATH OF EXIT	
ALTERNATE PATH	
FIRE HOSE REEL	
EXTINGUISHER	
FIRE BLANKET	
TELEPHONE	
FIRE INDICATOR PANEL	



EVACUATION SIGN AND DIAGRAM

660 CREEK ROAD (UPSTAIRS), MOUNT GRAVATT

IN CASE OF FIRE

REMOVE PEOPLE
from immediate danger

ALERT THE FIRE SERVICE
• break manual call point
• call 000

CONFINE FIRE & SMOKE
close doors and windows (if safe to do so)

EVACUATE
to the ASSEMBLY AREA

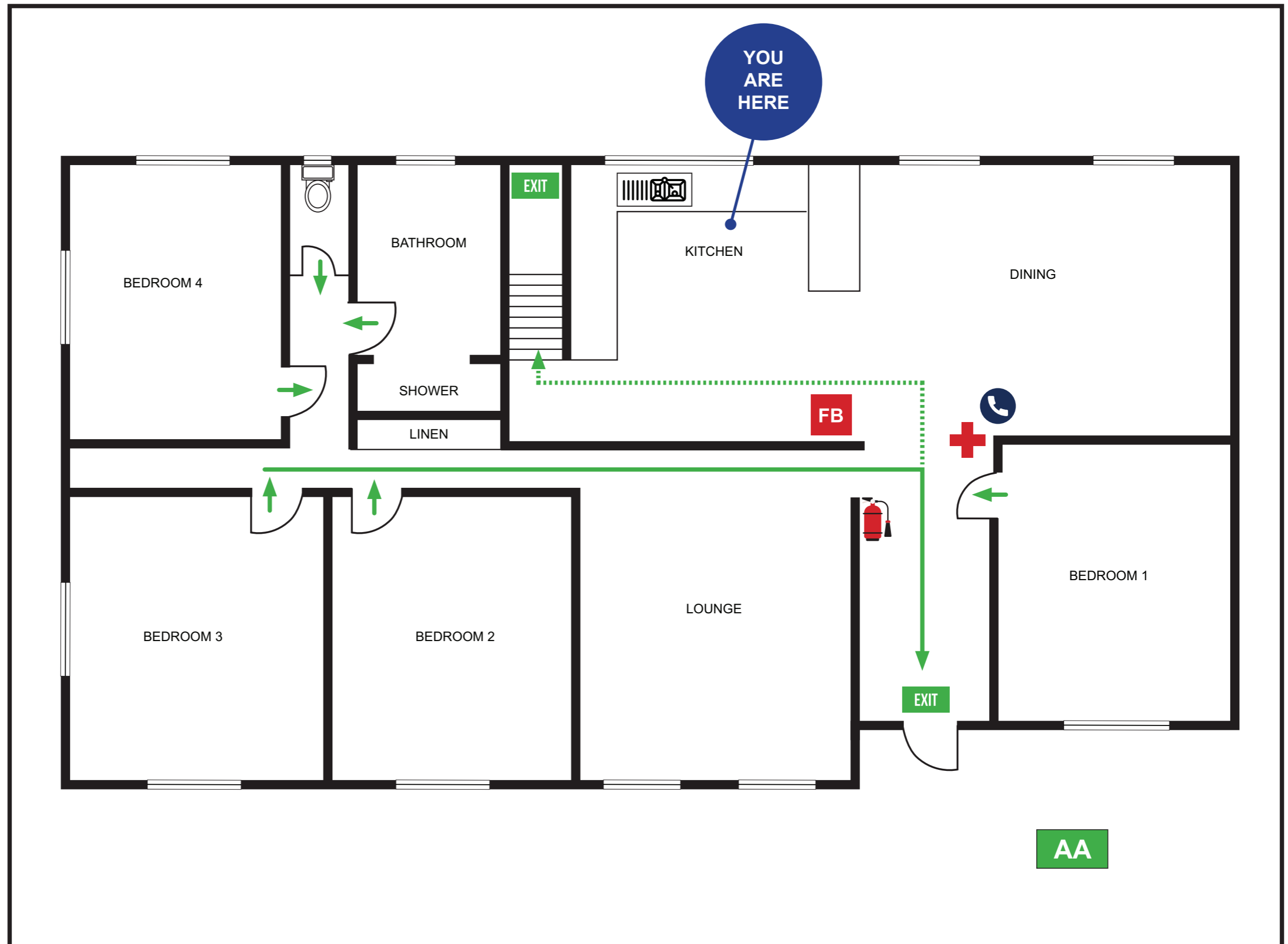
Mobility impaired persons
should evacuate immediately on
hearing the fire alarm assisted
by a nominated person.



000
EMERGENCY

IN AN EMERGENCY DIAL 000

EXIT	
ASSEMBLY AREA	
PATH OF EXIT	
ALTERNATE PATH	
FIRE HOSE REEL	
EXTINGUISHER	
FIRE BLANKET	
TELEPHONE	
FIRE INDICATOR PANEL	



EVACUATION SIGN AND DIAGRAM

660 CREEK ROAD (UPSTAIRS), MOUNT GRAVATT

IN CASE OF FIRE

REMOVE PEOPLE
from immediate danger

ALERT THE FIRE SERVICE
• break manual call point
• call 000

CONFINE FIRE & SMOKE
close doors and windows (if safe to do so)

EVACUATE
to the ASSEMBLY AREA

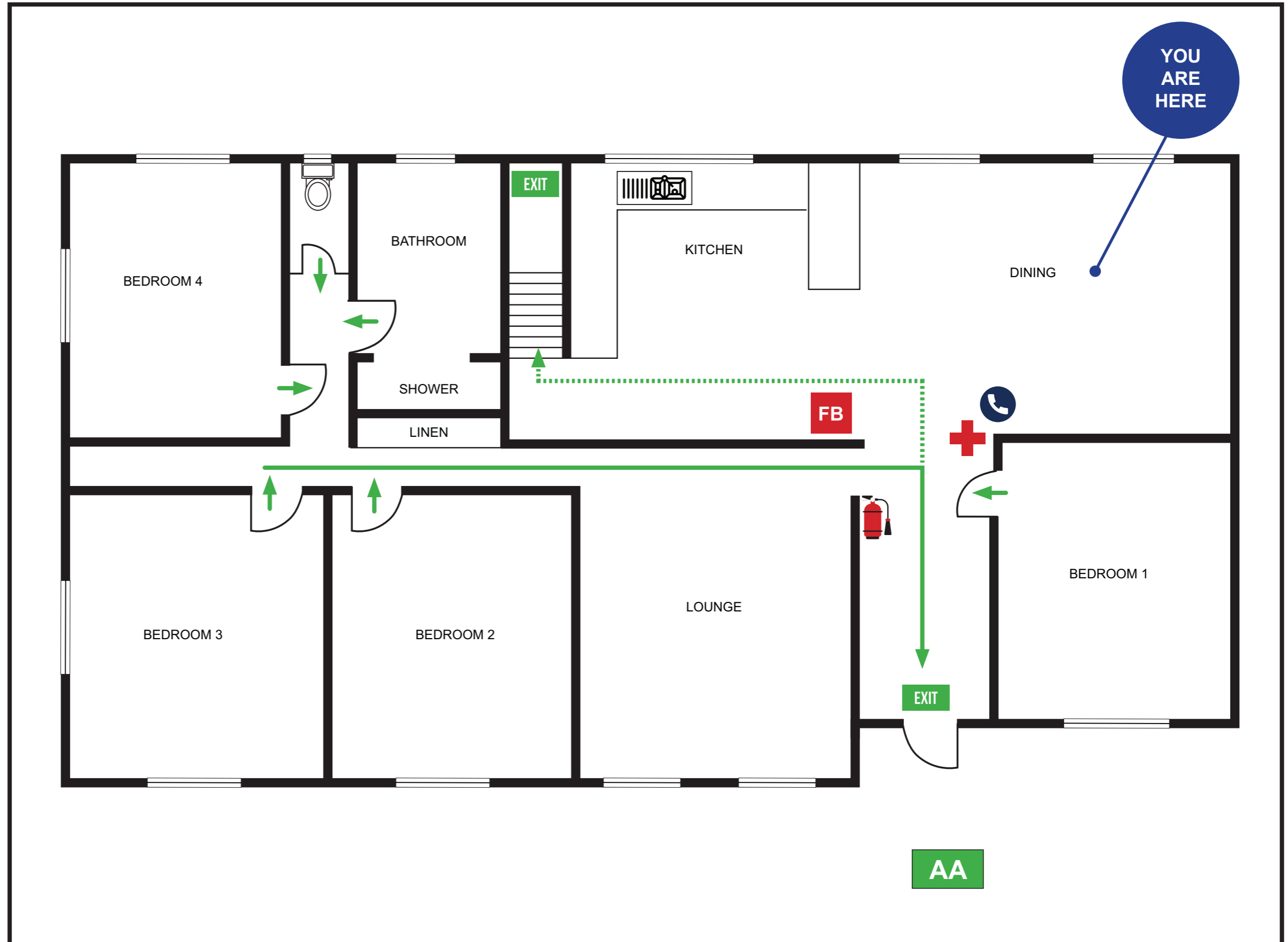
Mobility impaired persons
should evacuate immediately on
hearing the fire alarm assisted
by a nominated person.



000
EMERGENCY

IN AN EMERGENCY DIAL 000

EXIT	
ASSEMBLY AREA	
PATH OF EXIT	
ALTERNATE PATH	
FIRE HOSE REEL	
EXTINGUISHER	
FIRE BLANKET	
TELEPHONE	
FIRE INDICATOR PANEL	



EVACUATION SIGN AND DIAGRAM

660 CREEK ROAD (UPSTAIRS), MOUNT GRAVATT

IN CASE OF FIRE

REMOVE PEOPLE
from immediate danger

ALERT THE FIRE SERVICE
• break manual call point
• call 000

CONFINE FIRE & SMOKE
close doors and windows (if safe to do so)

EVACUATE
to the ASSEMBLY AREA

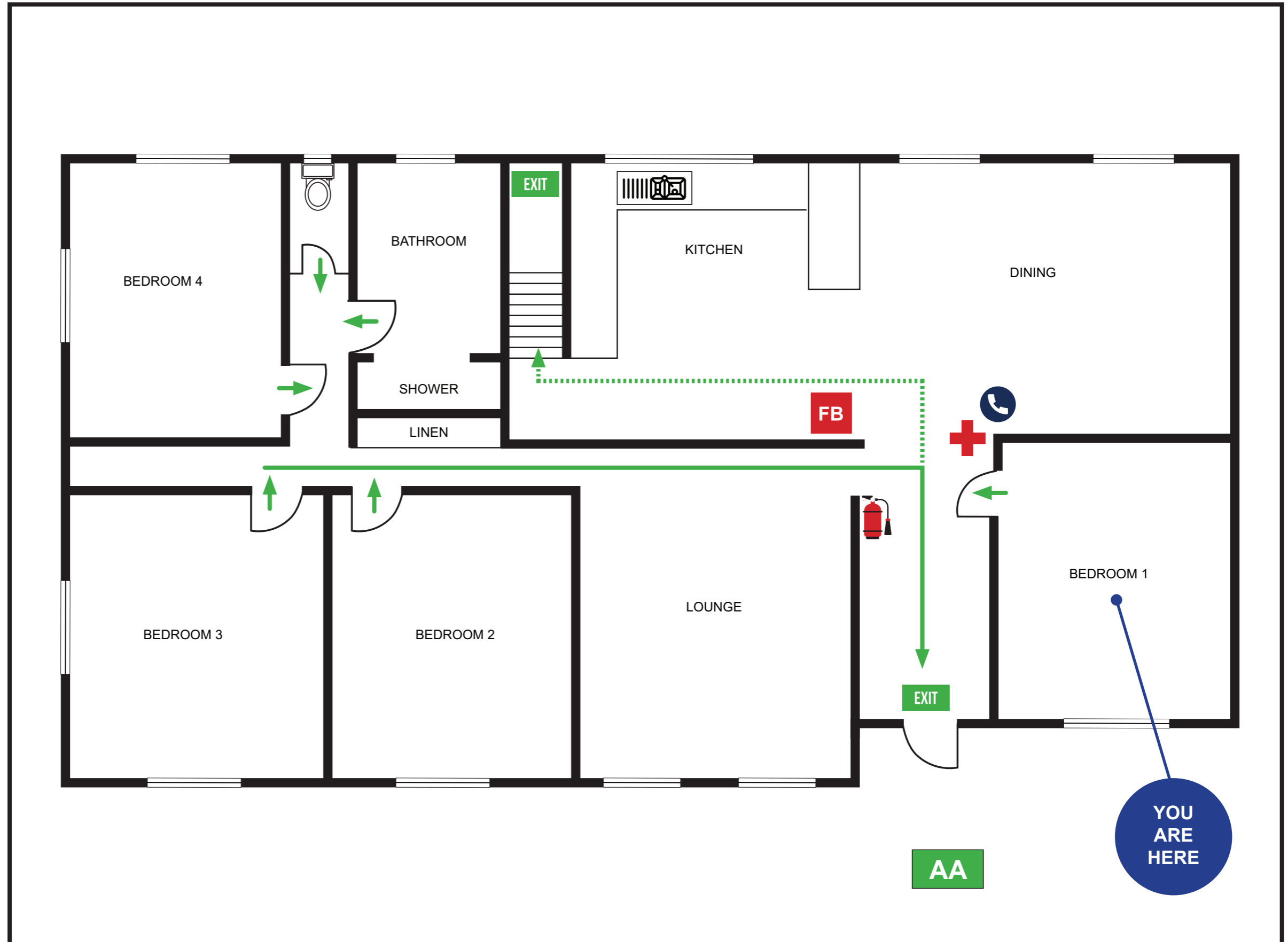
Mobility impaired persons
should evacuate immediately on
hearing the fire alarm assisted
by a nominated person.



000
EMERGENCY

IN AN EMERGENCY DIAL 000

EXIT	
ASSEMBLY AREA	
PATH OF EXIT	
ALTERNATE PATH	
FIRE HOSE REEL	
EXTINGUISHER	
FIRE BLANKET	
TELEPHONE	
FIRE INDICATOR PANEL	



EVACUATION SIGN AND DIAGRAM

660 CREEK ROAD (UPSTAIRS), MOUNT GRAVATT

IN CASE OF FIRE

REMOVE PEOPLE
from immediate danger

ALERT THE FIRE SERVICE
• break manual call point
• call 000

CONFINE FIRE & SMOKE
close doors and windows (if safe to do so)

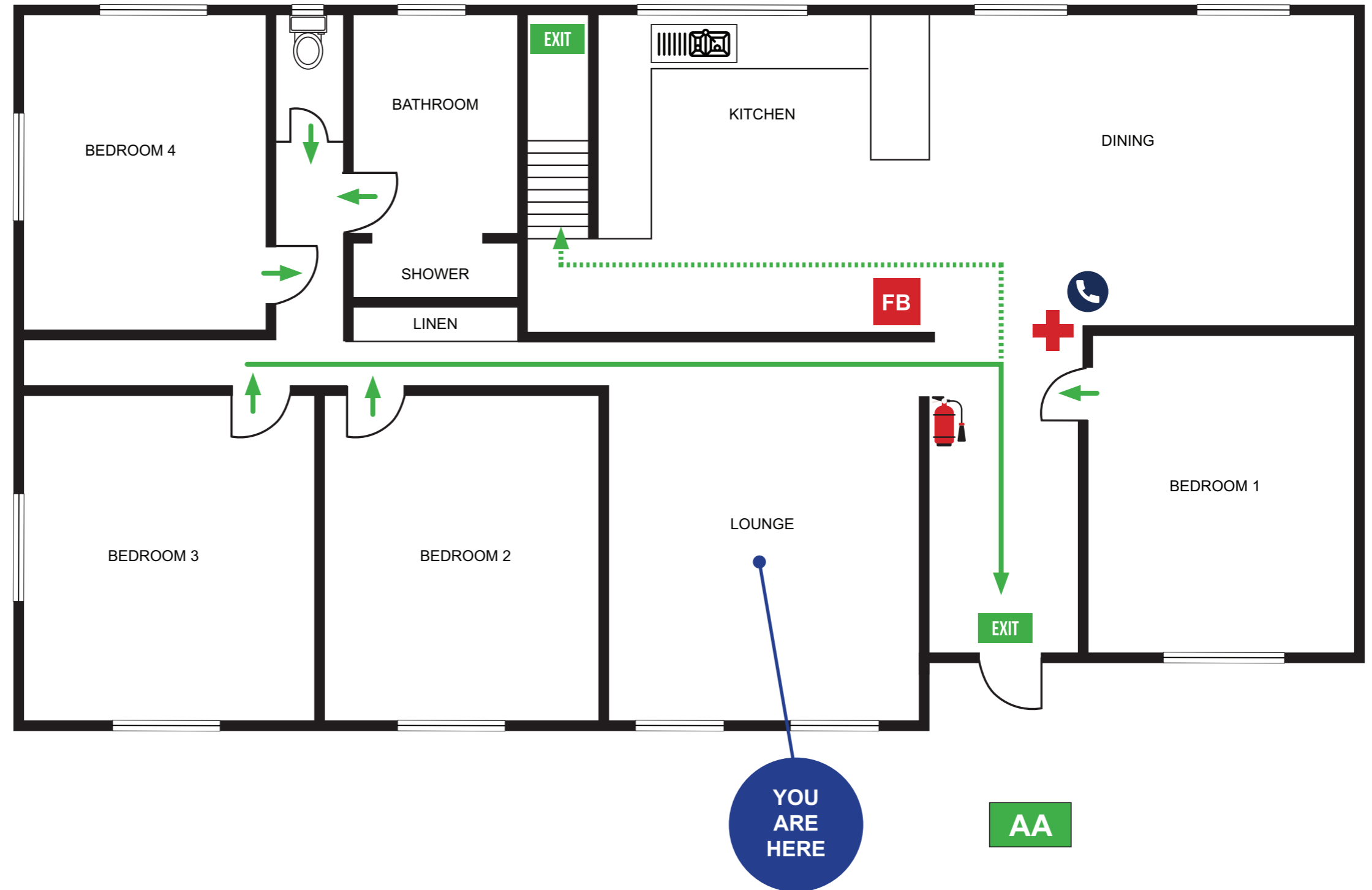
EVACUATE
to the ASSEMBLY AREA

Mobility impaired persons
should evacuate immediately on
hearing the fire alarm assisted
by a nominated person.



000
EMERGENCY
IN AN EMERGENCY DIAL 000

EXIT	
ASSEMBLY AREA	
PATH OF EXIT	
ALTERNATE PATH	
FIRE HOSE REEL	
EXTINGUISHER	
FIRE BLANKET	
TELEPHONE	
FIRE INDICATOR PANEL	



EVACUATION SIGN AND DIAGRAM

660 CREEK ROAD (UPSTAIRS), MOUNT GRAVATT

IN CASE OF FIRE

REMOVE PEOPLE
from immediate danger

ALERT THE FIRE SERVICE
• break manual call point
• call 000

CONFINE FIRE & SMOKE
close doors and windows (if safe to do so)

EVACUATE
to the ASSEMBLY AREA

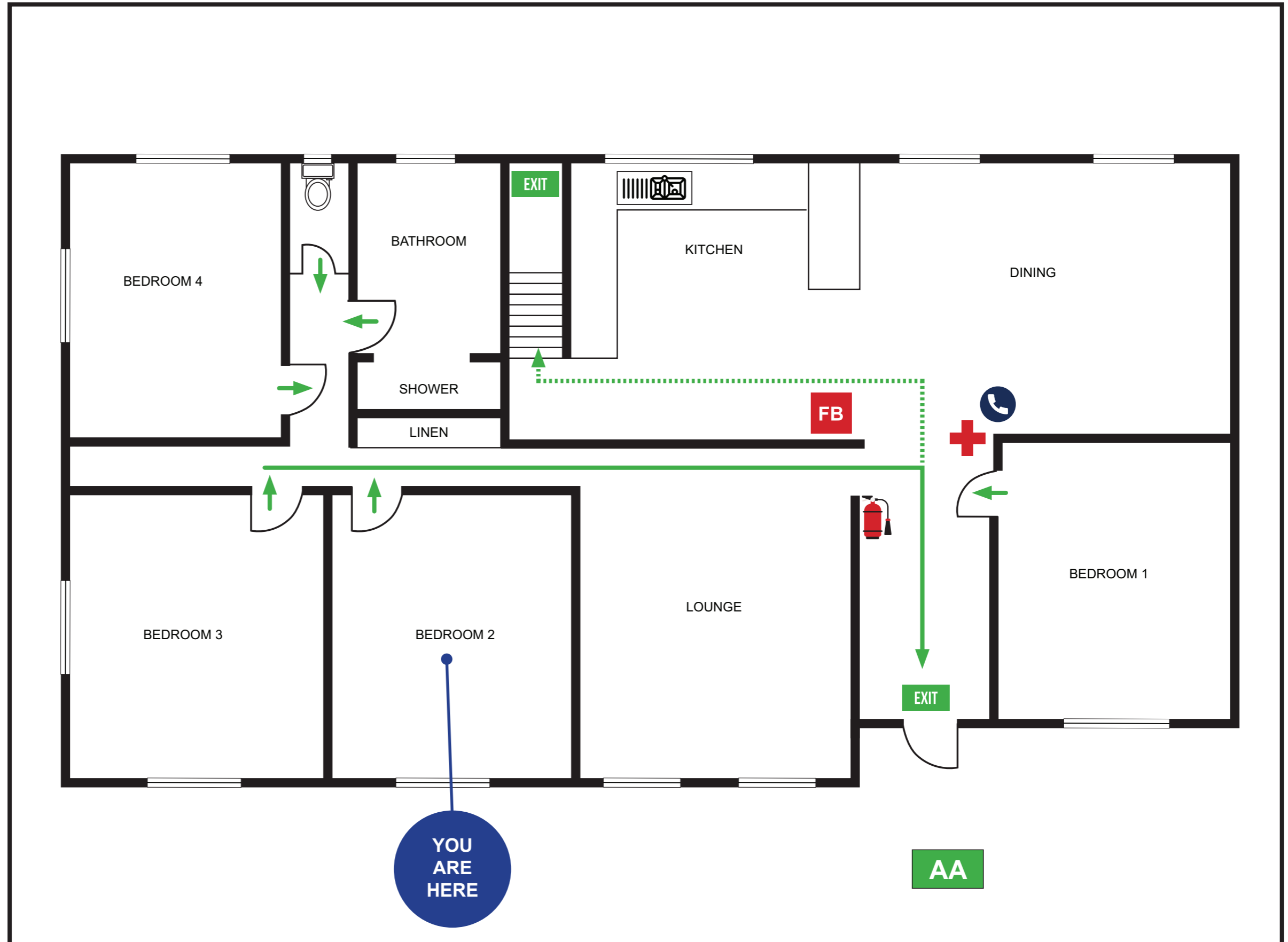
Mobility impaired persons
should evacuate immediately on
hearing the fire alarm assisted
by a nominated person.



000
EMERGENCY

IN AN EMERGENCY DIAL 000

EXIT	
ASSEMBLY AREA	
PATH OF EXIT	
ALTERNATE PATH	
FIRE HOSE REEL	
EXTINGUISHER	
FIRE BLANKET	
TELEPHONE	
FIRE INDICATOR PANEL	



EVACUATION SIGN AND DIAGRAM

660 CREEK ROAD (UPSTAIRS), MOUNT GRAVATT

IN CASE OF FIRE

REMOVE PEOPLE
from immediate danger

ALERT THE FIRE SERVICE
• break manual call point
• call 000

CONFINE FIRE & SMOKE
close doors and windows (if safe to do so)

EVACUATE
to the ASSEMBLY AREA

Mobility impaired persons
should evacuate immediately on
hearing the fire alarm assisted
by a nominated person.



000
EMERGENCY

IN AN EMERGENCY DIAL 000

EXIT	
ASSEMBLY AREA	
PATH OF EXIT	
ALTERNATE PATH	
FIRE HOSE REEL	
EXTINGUISHER	
FIRE BLANKET	
TELEPHONE	
FIRE INDICATOR PANEL	

