

# EVACUATION SIGN AND DIAGRAM

## 362 RICHMOND ROAD, CANON HILL

### IN CASE OF FIRE

**R**EMOVE PEOPLE  
from immediate danger

**A**LERT THE FIRE SERVICE  
• break manual call point  
• call 000

**C**ONFINE FIRE & SMOKE  
close doors and windows (if safe to do so)

**E**VACUATE  
to the ASSEMBLY AREA

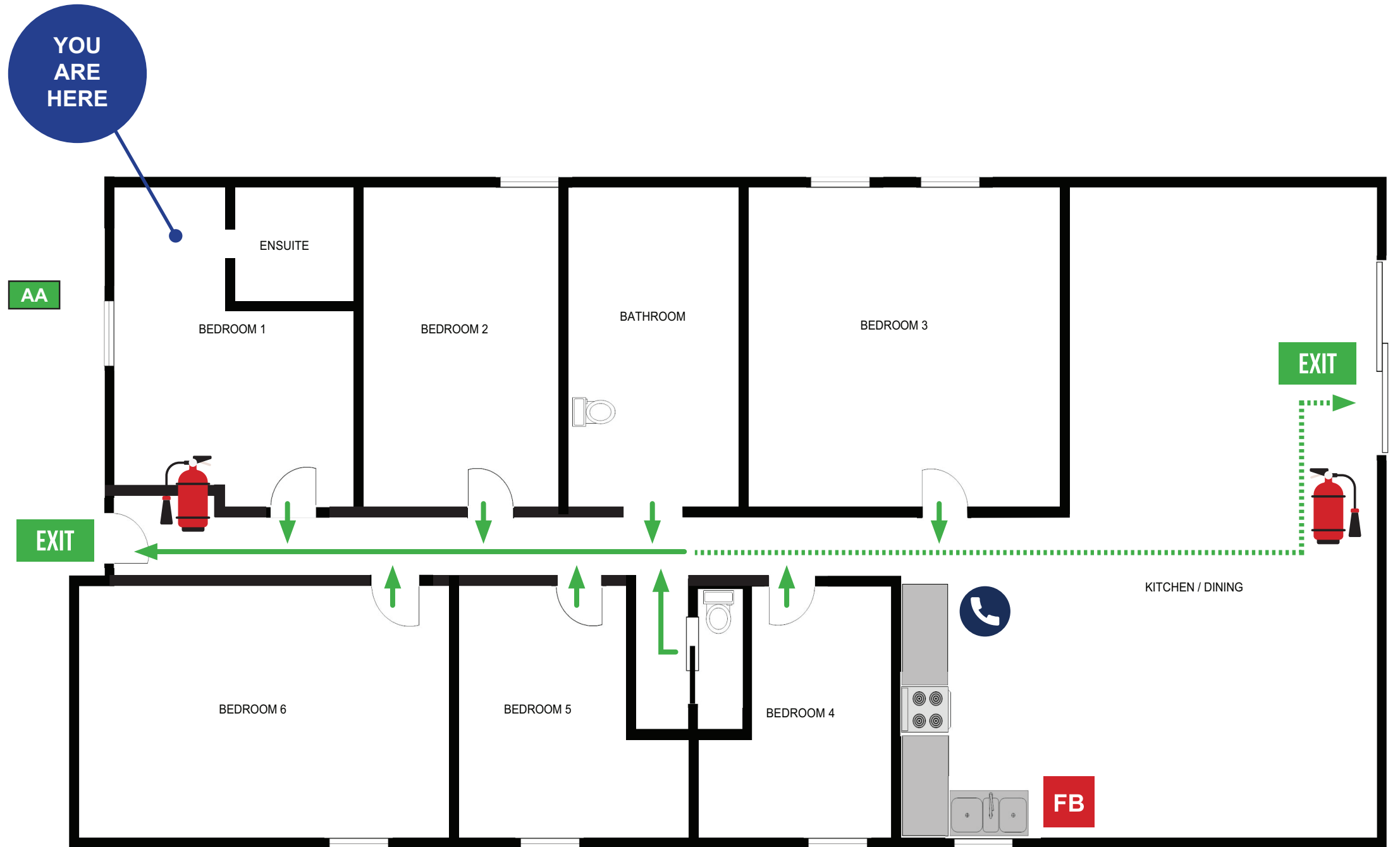
Mobility impaired persons  
should evacuate immediately on  
hearing the fire alarm assisted  
by a nominated person.



**000**  
EMERGENCY

IN AN EMERGENCY DIAL 000

EXIT	
ASSEMBLY AREA	
PATH OF EXIT	
ALTERNATE PATH	
FIRE HOSE REEL	
EXTINGUISHER	
FIRE BLANKET	
TELEPHONE	



# EVACUATION SIGN AND DIAGRAM

## 362 RICHMOND ROAD, CANNON HILL

### IN CASE OF FIRE

**R**EMOVE PEOPLE  
from immediate danger

**A**LERT THE FIRE SERVICE  
• break manual call point  
• call 000

**C**ONFINE FIRE & SMOKE  
close doors and windows (if safe to do so)

**E**VACUATE  
to the ASSEMBLY AREA

Mobility impaired persons  
should evacuate immediately on  
hearing the fire alarm assisted  
by a nominated person.



**000**  
EMERGENCY

IN AN EMERGENCY DIAL 000

EXIT	
ASSEMBLY AREA	
PATH OF EXIT	
ALTERNATE PATH	
FIRE HOSE REEL	
EXTINGUISHER	
FIRE BLANKET	
TELEPHONE	



# EVACUATION SIGN AND DIAGRAM

## 362 RICHMOND ROAD, CANNON HILL

### IN CASE OF FIRE

**R**EMOVE PEOPLE  
from immediate danger

**A**LERT THE FIRE SERVICE  
• break manual call point  
• call 000

**C**ONFINE FIRE & SMOKE  
close doors and windows (if safe to do so)

**E**VACUATE  
to the ASSEMBLY AREA

Mobility impaired persons  
should evacuate immediately on  
hearing the fire alarm assisted  
by a nominated person.



**000**  
EMERGENCY

IN AN EMERGENCY DIAL 000

EXIT	
ASSEMBLY AREA	
PATH OF EXIT	
ALTERNATE PATH	
FIRE HOSE REEL	
EXTINGUISHER	
FIRE BLANKET	
TELEPHONE	



# EVACUATION SIGN AND DIAGRAM

## 362 RICHMOND ROAD, CANNON HILL

### IN CASE OF FIRE

**R**EMOVE PEOPLE  
from immediate danger

**A**LERT THE FIRE SERVICE  
• break manual call point  
• call 000

**C**ONFINE FIRE & SMOKE  
close doors and windows (if safe to do so)

**E**VACUATE  
to the ASSEMBLY AREA

Mobility impaired persons  
should evacuate immediately on  
hearing the fire alarm assisted  
by a nominated person.



**000**  
EMERGENCY

IN AN EMERGENCY DIAL 000

EXIT	
ASSEMBLY AREA	
PATH OF EXIT	
ALTERNATE PATH	
FIRE HOSE REEL	
EXTINGUISHER	
FIRE BLANKET	
TELEPHONE	



# EVACUATION SIGN AND DIAGRAM

## 362 RICHMOND ROAD, CANNON HILL

### IN CASE OF FIRE

**R**EMOVE PEOPLE  
from immediate danger

**A**LERT THE FIRE SERVICE  
• break manual call point  
• call 000

**C**ONFINE FIRE & SMOKE  
close doors and windows (if safe to do so)

**E**VACUATE  
to the ASSEMBLY AREA

Mobility impaired persons  
should evacuate immediately on  
hearing the fire alarm assisted  
by a nominated person.



**000**  
EMERGENCY

IN AN EMERGENCY DIAL 000

EXIT	
ASSEMBLY AREA	
PATH OF EXIT	
ALTERNATE PATH	
FIRE HOSE REEL	
EXTINGUISHER	
FIRE BLANKET	
TELEPHONE	



# EVACUATION SIGN AND DIAGRAM

## 362 RICHMOND ROAD, CANNON HILL

### IN CASE OF FIRE

**R**EMOVE PEOPLE  
from immediate danger

**A**LERT THE FIRE SERVICE  
• break manual call point  
• call 000

**C**ONFINE FIRE & SMOKE  
close doors and windows (if safe to do so)

**E**VACUATE  
to the ASSEMBLY AREA

Mobility impaired persons  
should evacuate immediately on  
hearing the fire alarm assisted  
by a nominated person.



**000**  
EMERGENCY

IN AN EMERGENCY DIAL 000

EXIT	
ASSEMBLY AREA	
PATH OF EXIT	
ALTERNATE PATH	
FIRE HOSE REEL	
EXTINGUISHER	
FIRE BLANKET	
TELEPHONE	



# EVACUATION SIGN AND DIAGRAM

## 362 RICHMOND ROAD, CANNON HILL

### IN CASE OF FIRE

**R**EMOVE PEOPLE  
from immediate danger

**A**LERT THE FIRE SERVICE  
• break manual call point  
• call 000

**C**ONFINE FIRE & SMOKE  
close doors and windows (if safe to do so)

**E**VACUATE  
to the ASSEMBLY AREA

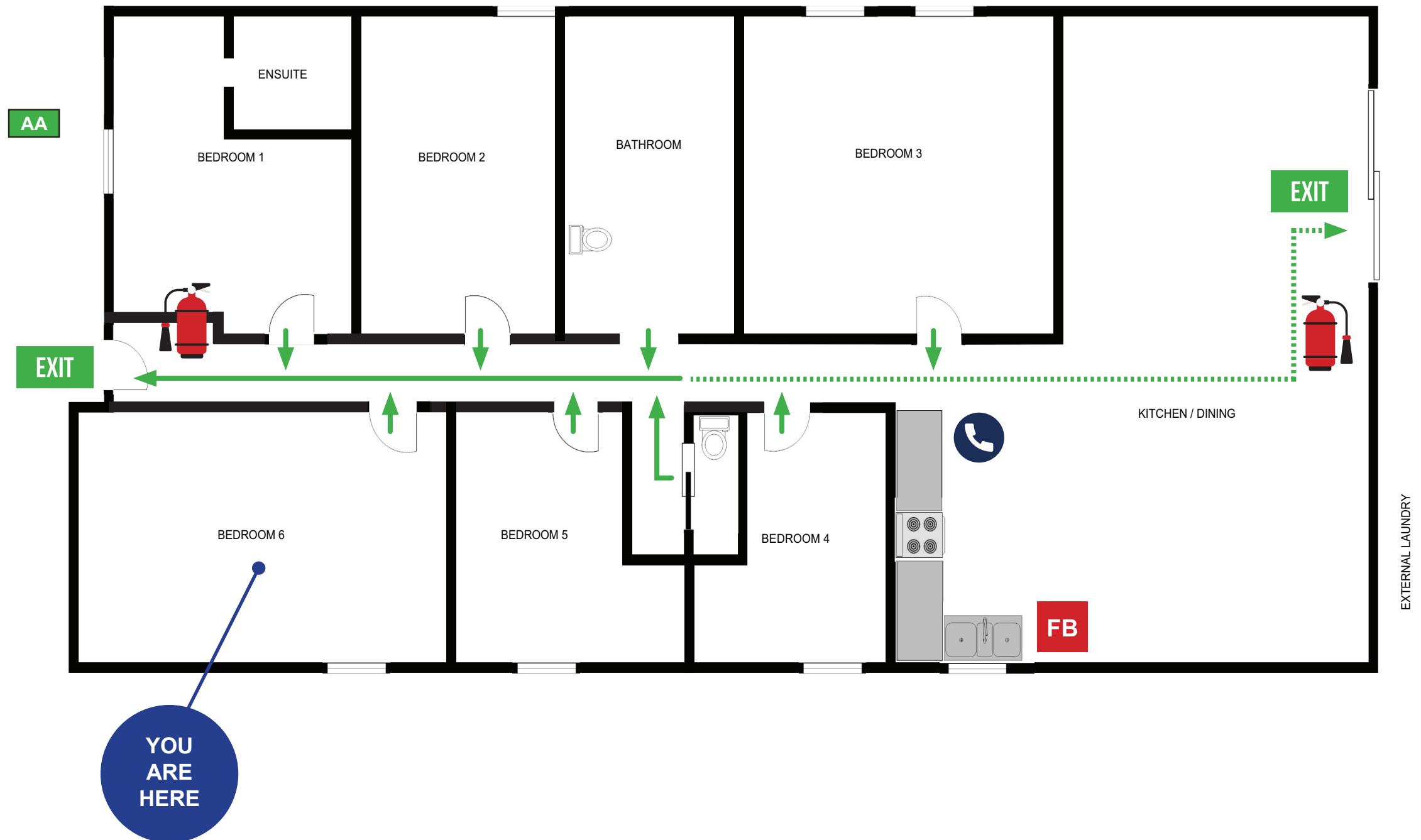
Mobility impaired persons  
should evacuate immediately on  
hearing the fire alarm assisted  
by a nominated person.



**000**  
EMERGENCY

IN AN EMERGENCY DIAL 000

EXIT	
ASSEMBLY AREA	
PATH OF EXIT	
ALTERNATE PATH	
FIRE HOSE REEL	
EXTINGUISHER	
FIRE BLANKET	
TELEPHONE	



# EVACUATION SIGN AND DIAGRAM

## 362 RICHMOND ROAD, CANNON HILL

### IN CASE OF FIRE

**R**EMOVE PEOPLE  
from immediate danger

**A**LERT THE FIRE SERVICE  
• break manual call point  
• call 000

**C**ONFINE FIRE & SMOKE  
close doors and windows (if safe to do so)

**E**VACUATE  
to the ASSEMBLY AREA

Mobility impaired persons  
should evacuate immediately on  
hearing the fire alarm assisted  
by a nominated person.



**000**  
EMERGENCY  
IN AN EMERGENCY DIAL 000

EXIT	
ASSEMBLY AREA	
PATH OF EXIT	
ALTERNATE PATH	
FIRE HOSE REEL	
EXTINGUISHER	
FIRE BLANKET	
TELEPHONE	





# EVACUATION SIGN AND DIAGRAM

## 362 RICHMOND ROAD, CANNON HILL

### IN CASE OF FIRE

**R**EMOVE PEOPLE  
from immediate danger

**A**LERT THE FIRE SERVICE  
• break manual call point  
• call 000

**C**ONFINE FIRE & SMOKE  
close doors and windows (if safe to do so)

**E**VACUATE  
to the ASSEMBLY AREA

Mobility impaired persons  
should evacuate immediately on  
hearing the fire alarm assisted  
by a nominated person.



**000**  
EMERGENCY

IN AN EMERGENCY DIAL 000

EXIT	
ASSEMBLY AREA	
PATH OF EXIT	
ALTERNATE PATH	
FIRE HOSE REEL	
EXTINGUISHER	
FIRE BLANKET	
TELEPHONE	



# EVACUATION SIGN AND DIAGRAM

## 362 RICHMOND ROAD, CANNON HILL

### IN CASE OF FIRE

**R**EMOVE PEOPLE  
from immediate danger

**A**LERT THE FIRE SERVICE  
• break manual call point  
• call 000

**C**ONFINE FIRE & SMOKE  
close doors and windows (if safe to do so)

**E**VACUATE  
to the ASSEMBLY AREA

Mobility impaired persons  
should evacuate immediately on  
hearing the fire alarm assisted  
by a nominated person.



**000**  
EMERGENCY

IN AN EMERGENCY DIAL 000

EXIT	
ASSEMBLY AREA	
PATH OF EXIT	
ALTERNATE PATH	
FIRE HOSE REEL	
EXTINGUISHER	
FIRE BLANKET	
TELEPHONE	

